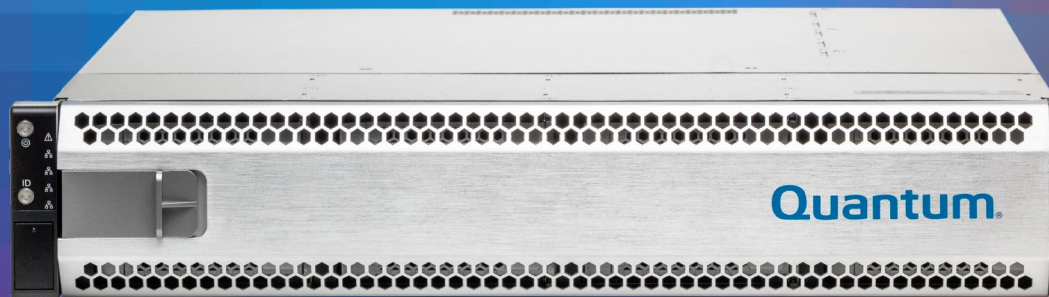


Quantum.

H2000 SERIES



DATASHEET

FEATURES & BENEFITS

Highly Available, Flexible Design

Every H2000 Series model is built on a dual controller architecture, with flexible storage network connectivity options to meet the needs of any high-performance, low-latency workload.

Powerful Hardware Delivers Maximum Performance and Value

The H2000 Series takes advantage of powerful hardware and standards such as PCIe 4.0, 12G SAS Connectivity, and AMD CPUs to deliver maximum performance with the best ROI.

Tightly Integrated with StorNext

The H2000 Series is ideally suited to scale capacity of a StorNext 7 File System—and in that use case, StorNext users can manage the H2000 array directly within the StorNext 7 File System user interface.

High-performance block storage for high-throughput, low-latency workloads.

IMPROVE PERFORMANCE WITH A HIGHLY AVAILABLE, FLEXIBLE DESIGN

The Quantum H2000 Series is high-performance, highly flexible storage ready to go to work scaling out your StorNext® File System capacity and other high-throughput, low-latency workloads. The H2000 Series is available in two configurations, 2U12 and 2U24, that support different types of SSD and HDD storage form factors, and can be scaled up using optional JBODs.



H2012 Front



H2024 Front



H2012 Rear



H2024 Rear

Every H2000 model has a dual controller hardware architecture using high-performance multi-core AMD CPUs and offers flexible networking options that include 100 GbE, 25 GbE, and 32 Gb Fibre Channel.

POWERFUL HARDWARE DELIVERS BEST PERFORMANCE AND VALUE

The Quantum H2000 Series takes advantage of powerful hardware and standards to deliver the best performance at the best value, including PCIe 4.0, end-to-end 12G SAS connectivity, and DRAM write caching to deliver the best performance for high-throughput, low-latency workloads.

LEARN MORE:

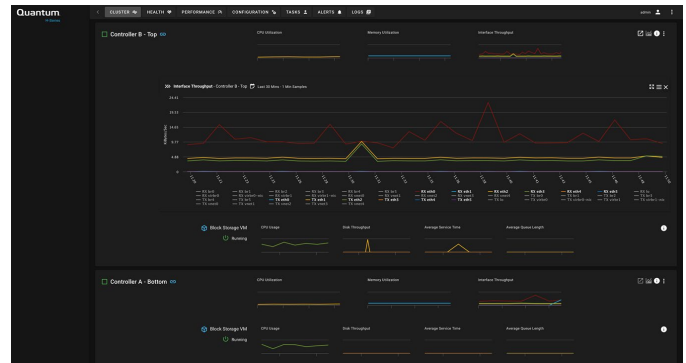
www.quantum.com/h2000-series

TECHNICAL SPECIFICATIONS

INTUITIVE USER INTERFACE FOR THE BEST USER EXPERIENCE

The H2000 Series is ideally suited for adding capacity to a StorNext File System environment—and in that use case, StorNext 7 users can configure, monitor, and manage H2000 arrays directly within the StorNext 7 user interface.

For customers that deploy the H2000 Series as a block device in older StorNext File System environments, or as a standalone block storage device, the H2000 Series provides an intuitive, simple user interface that makes it easy to monitor system health and system performance.



Monitor H2000 Series System Health

Specifications	H2012	H2024	2U12 JBOD	2U24 JBOD
Form Factor	2U rack-mounted chassis			
Drives per Chassis	12	24	12	24
Drive Options (SED or non-SED)	4 TB, 8 TB, 16 TB NL-SAS 7.2K RPM	1.92 TB, 7.68 TB, 15.36 TB SAS SSD 1.2 TB, 1.8 TB, 2.4 TB SAS 10K RPM	4 TB, 8 TB, 16 TB NL-SAS 7.2K RPM	1.92 TB, 7.68 TB, 15.36 TB SAS SSD 1.2 TB, 1.8 TB, 2.4 TB SAS 10K RPM
Raw Capacity per Chassis (TB)	48	46	48	46
	64	184	64	184
	192	369	192	369
Useable Capacity per Chassis (TB)	40	38	40	38
	80	154	80	154
	160	307	160	307
Connectivity Cards Up to 3 cards per chassis	Dual 100 Gb / 40 GigE Quad 25 Gb / 10 GigE Quad 10GBASE-T Ethernet Quad 32 Gb Fibre Channel		12G SAS for expansion	
Onboard I/O	2x 10GBASE-T per controller for monitoring and management (4x total per array) 2x 12 Gbps SAS per controller (4x total per array)		N/A	
Management	Integrated IPMI 2.0 + KVM with dedicated LAN		Web-based management, SNMP	
Physical Dimensions	Height 3.43" (87 mm)	Height 3.43" (87 mm)	Height 3.43" (87 mm)	Height 3.43" (87 mm)
	Width 17.7" (450 mm)	Width 17.7" (450 mm)	Width 17.7" (450 mm)	Width 17.7" (450 mm)
	Depth 24.2" (614 mm)	Depth 22.8" (580 mm)	Depth 20.4" (518 mm)	Depth 19.0" (483 mm)
	Weight 63 lbs (28.58 kg)	Weight 59 lbs (26.76 kg)	Weight 48 lbs (21.77 kg)	Weight 44 lbs (19.96 kg)
Power Supplies	1300 W AC redundant		550 W AC redundant	
Power Supply Input	100 - 140 Vac / 12.5 A / 1000 W Max / 50-60 Hz 200 - 240 Vac / 8.5 A / 50-60 Hz		100 - 240 Vac / 7 A / 50-60 Hz	100 - 240 Vac / 7 A / 50-60 Hz
Operating Temperature	0 °C to 35 °C (32 °F to 95 °F)			
Non-Operating Temperature	-20 °C to 70 °C (-4 °F to 158 °F)			
Operating Relative Humidity	5% to 95% non-condensing			

USA Sales & Support
Tel: (949) 360-9043
sales@wct.com

©2020 WCT, Registered office: 27141 Aliso Creek Rd. Suite 290, Aliso Viejo, CA. 92656
The information given in this data sheet is for marketing purposes and is not intended to be a specification nor to provide the basis for a warranty. The products and their details are subject to change. For a detailed specification sheet or if you need to meet a specific requirement, please contact WCT.

